

HOST

Black Beer Cooler Instruction manual

Model:

HT001 (HOST1211DH)
HT127 (HOST1212DS)
HT125 (HOST1215DS)
HT174 (HOST1217DH)



**Read this instruction
manual carefully
before use**

Safety Instructions

- Position on a flat, stable surface.
- A service agent/qualified technician should carry out installation and any repairs if required. Do not remove any components or service panels on this product.
- Consult Local and National Standards to comply with the following:
 - Health and Safety at Work Legislation
 - BS EN Codes of Practice
 - Fire Precautions
 - IEE Wiring Regulations
 - Building Regulations
- DO NOT immerse in water, or use steam/jet washers to clean the unit.
- DO NOT cover the appliance when it is operating.
- DO NOT store food in the appliance.
- Always carry, store and handle the appliance in a vertical position.
- Never tilt the appliance more than 45° from the vertical.
- Not suitable for outdoor use.
- Keep all packaging away from children. Dispose of the packaging in accordance with the regulations of local authorities.
- If the power cord is damaged, it must be replaced by a recommended qualified technician in order to avoid a hazard.
- This appliance is not intended for use by persons (including children) with reduced physical, sensory or mental capabilities, or lack of experience and knowledge, unless they have been given supervision or instruction concerning the use of the appliance by a person responsible for their safety.

- HOST recommend that this product is connected to a circuit protected by an appropriate RCD (Residual Current Device).
- HOST recommend that this appliance should be periodically tested (at least annually) by a Competent Person. Testing should include, but not be limited to: Visual Inspection, Polarity Test, Earth Continuity, Insulation Continuity and Functional Testing.

Caution: Risk of Fire



- Do not store explosive substances such as aerosol cans with a flammable propellant in this appliance.

Warning: Keep all ventilation openings clear of obstruction. Unit should not be boxed in without adequate ventilation.

- **Warning:** Do not use mechanical devices or other means to accelerate the defrosting process, other than those recommended by the manufacturer.
- **Warning:** Do not damage the refrigerant circuit.
- **Warning:** Do not use electrical appliances inside the food storage compartments of the appliance.

Installation

Note:

Not for use in vans or trailers, food trucks or similar vehicles.

If the unit has not been stored or moved in an upright position, let it stand upright for approximately 12 hours before operation. If in doubt allow to stand.

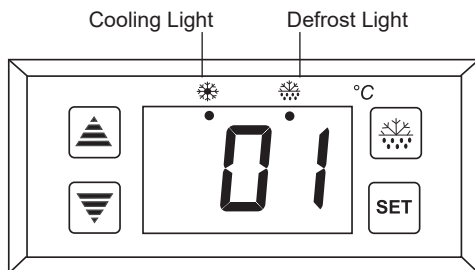
1. Remove the appliance from the packaging and the protective film from all surfaces.
2. Avoid positioning the appliance in direct sunlight or damp areas.
3. To optimize performance and longevity, ensure a minimum clearance of 2.5cm is maintained between the unit and walls and other objects, with a minimum 20cm clearance on the top. **NEVER LOCATE NEXT TO A HEAT SOURCE.**
4. Insert the slide-out shelf/shelves at the desired levels and place the smaller shelf/shelves on the floor of the appliance.
5. If necessary, adjust the screw feet of the appliance to make it level.

Note: Before using the appliance for the first time, clean the shelves and interior with soapy water then dry well.

Operation

Control Panel

The control panel is located below the doors on the front of the appliance.



Turn On

1. Close the door of the appliance.
2. Connect the appliance to a mains power supply.
3. Turn the light switches On [I] or Off [O] as desired.

Note: The Cooling Light is illuminated when the appliance is chilling the interior cabinet.

Set the Operating Temperature

1. Press the **SET** button. The display will flash.
2. Press the or buttons to display the required temperature.
3. Press the **SET** button to store the temperature.

Manual Defrost

- HOST Back Bar Chillers feature an automatic defrost. However, should the appliance require an additional defrost period press and hold the and **SET** button for 6 seconds.
- Automatic defrost cycles are every 6 hours and last 20 minutes (factory defaults).
- To stop the Defrost press and hold the and **SET** button for 6 seconds.

Note: If a manual defrost is started this resets the automatic defrost timer. During defrost periods the Defrost light is illuminated.

Cleaning, Care & Maintenance

Switch off and disconnect from the power supply before cleaning

- Clean the interior of the appliance as often as possible.
- Do not use abrasive cleaning agents. These can leave harmful residues.
- Always wipe dry after cleaning.

Refrigerating tips:

Condensation and ice will form with frequent and prolonged opening of the doors. Operating outside of the recommend temperature range and placing next to a heat source will also increase the amount of ice and internal/external condensation. If external condensation occurs wipe the surface down with a cloth.

Excessive ice will result in longer running times that will increase energy consumption and increase the deterioration of components.

If the gasket or seal is damaged or deformed, energy consumption will increase. To restore efficiency, replace gasket.

Do not obstruct fans and do not exceed max load lines, as doing so will impact air distribution and increase energy usage.

Cleaning the Condenser

Periodically cleaning the condenser can extend the life of the appliance. The condenser is located at the back of the appliance.

Failure to clean the condenser will increase energy consumption, reduce the performance and life of your Polar unit, and thus may invalidate your warranty.

Note: Use a soft brush or vacuum cleaner to clean the fins of the condenser, taking care not to damage the fins.

Removing Doors (Sliding Doors only)

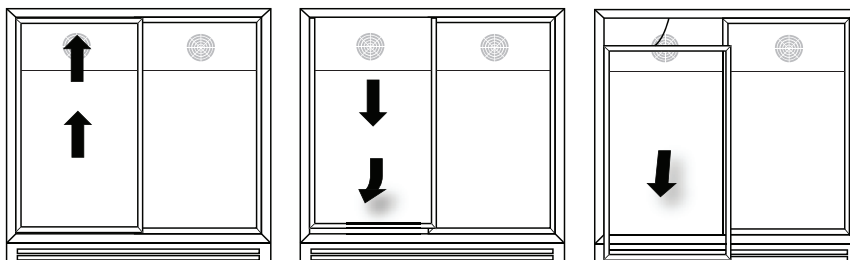
When cleaning the appliance or replacing the lamp it may be necessary to remove the doors to improve access.

To remove the doors:

1. Holding the sides of the first door, lift the door into the upper runner.
2. Pull the bottom of the door out and down simultaneously so the door clears the bottom runner.

Note: The automatic door-closing system means that the doors are attached to the appliance by a cord. Do not break or remove this cord.

3. Place the door to the side of the appliance.
4. Repeat for the remaining doors.
5. To replace the doors, slot them into the upper runner and then push the bottom of the door in and down to slot it in to the bottom runner.



Troubleshooting

A qualified technician must carry out repairs if required.

Fault	Probable Cause	Solution
The appliance is not working	The unit is not switched on	Check the unit is plugged in correctly and switched on
	Plug or lead is damaged	Replace plug or lead
	Fuse in the plug has blown	Replace the fuse
	Mains power supply fault	Check mains power supply
The appliance turns on, but the temperature is too high/low	Condenser blocked with dust	Clean Condenser
	Doors are not shut properly	Check doors are shut and seals are not damaged
	Appliance is located near a heat source or air flow to the condenser is being interrupted	Move the appliance to a more suitable location
	Ambient temperature is too high	Increase ventilation or move appliance to a cooler position
	Insufficient airflow to the fans	Remove any blockages to the fans
	Appliance is overloaded	Reduce the amount stored in the appliance
The appliance is unusually loud	The appliance is touching a neighbouring object	Check installation position and change if necessary
	The appliance has not been installed in a level or stable position	Check installation position and change if necessary

Service

Should your appliance have a fault, please visit the Service section of the HOST website:

<https://www.host-appliances.com/repairs>

Technical Specifications

Model	Voltage	Power	Current	Temperature Range	Capacity (Litres)	Refrigerant	Dimensions (H x W x D) (mm)	Weight (kg)	Max. load of each shelf
HT001 (HOST1211DH)	230V 50Hz	230W	1.66A	2°C to 10°C	208	R600a	900 x 900 x 520	62	25kg
HT127 (HOST1212DS)	230V 50Hz	230W	1.66A	2°C to 10°C	208	R600a	900 x 900 x 520	62	25kg
HT125 (HOST1215DS)	230V 50Hz	230W	1.66A	2°C to 10°C	198	R600a	850 X 900 X 520	62	25kg
HT174 (HOST1217DH)	230V 50Hz	230W	1.66A	2°C to 10°C	198	R600a	850 X 900 X 520	62	25kg

Due to our continuous improvement process, the product specifications are subject to change without notice.

Optimal Storage temperature for food storage:	4°C
Optimal ambient temperature and humidity:	This appliance is intended to operate in climates where the maximum temperature and humidity are 30°C and 60% respectively
Impact of temperature settings on food waste:	This appliance shall be operated in its designated operating range to reduce food waste from spoilage
Ordering spares parts:	To order spare parts, please visit the link below: www.host-appliances.com Then type the relative item code and Spares
Minimum period of spares parts to be available:	Door handles, door hinges, knobs, dials and buttons, door gaskets, peripheral trays, baskets and racks for storage, as appropriate to the appliance, will be made available to both end users and professional users for a minimum of eight years after the last unit of the model is placed on the market. A broader selection of parts will also be made available to Professional users for this period
To find the model information on the product:	The location of the model No. is on the plate on the interior right-hand wall (and on the rear) of the appliance

Electrical Wiring

The appliance is supplied with a 3 pin BS1363 plug and lead.

The plug is to be connected to a suitable mains socket.

The appliance is wired as follows:

- Live wire (coloured brown) to terminal marked L
- Neutral wire (coloured blue) to terminal marked N
- Earth wire (coloured green/yellow) to terminal marked E

This appliance must be earthed.



If in doubt consult a qualified electrician.

Electrical isolation points must be kept clear of any obstructions. In the event of any emergency disconnection being required they must be readily accessible.

Disposal

EU regulations require refrigeration product to be disposed of by specialist companies who remove or recycle all gasses, metal and plastic components.

Consult your local waste collection authority regarding disposal of your appliance. Local authorities are not obliged to dispose of commercial refrigeration equipment but may be able to offer advice on how to dispose of the equipment locally.

Compliance

The WEEE logo on this product or its documentation indicates that the product must not be disposed of as household waste. To help prevent possible harm to human health and/or the environment, the product must be disposed of in an approved and environmentally safe recycling process. For further information on how to dispose of this product correctly, contact the product supplier, or the local authority responsible for waste disposal in your area.



HOST parts have undergone strict product testing in order to comply with regulatory standards and specifications set by international, independent, and federal authorities.



HOST products have been approved to carry the following symbol:

All rights reserved. No part of these instructions may be produced or transmitted in any form or by any means, electronic, mechanical, photocopying, recording or otherwise, without the prior written permission of HOST.
Every effort is made to ensure all details are correct at the time of going to press, however, HOST reserve the right to change specifications without notice.

HOST

Declaration of Conformity

We {Host} of {Host House, Newhouse Farm Industrial Estate, Mathern, Chepstow, NP16 6UP} hereby declare that the equipment is in conformity with the requirements of the following Regulations:

- **Machinery Directive 2006/42/EC**
Supply of Machinery (Safety) Regulations 2008
- **Electro-Magnetic Compatibility (EMC) Directive 2014/30/EU - recast of 2004/108/EC**
Electromagnetic Compatibility Regulations 2016 (S.I. 2016/1091)
- **Restriction of Hazardous Substances Directive (RoHS) 2015/863 amending Annex II to Directive 2011/65/EU**
The Restriction of the Use of Certain Hazardous Substances in Electrical and Electronic Equipment Regulations 2012 (S.I. 2012/3032)
- **Regulation (EC) No 1935/2004- Food Contact Materials (FCM)**
Regulation (EC) No 1935/2004 on Materials and Articles intended to Come into Contact with Food

We hereby declare that:
Equipment Model number:

HT001 (HOST1211DH) Back Bar Cooler with Double Hinged Doors Black - 900mm
HT127 (HOST1212DS) Back Bar Cooler with Double Sliding Doors Black - 900mm
HT125 (HOST1215DS) Back Bar Cooler with Double Sliding Doors Black - 850mm
HT174 (HOST1217DH) Back Bar Cooler with Double Hinged Doors Black 850mm

is in conformity with the applicable requirements of the following documents:

Ref. No.	Edition/date
EN 60335-1	2012 +A11:2014 +A13:2017 +A1:2019 +A2:2019 +A14:2019 +A15:2021
EN 60335-2-89	2010 +A1:2016 +A2:2017
EN 62233	2008
EN IEC 55014-1	2021
EN IEC 55014-2	2021
EN IEC 61000-3-2	2019 +A1:2021
EN 61000-3-3	2013 +A1:2019 +A2:2021

I hereby declare that the equipment named above has been designed to comply with the relevant sections of the above referenced specifications and is in accordance with the requirements of the Regulations:

Signed by:

Signed by:

AB6DB7656FFB441...

Full Name: Ashley Hooper
Title: Group Head of Product
Quality & Compliance
Location: Bristol, United Kingdom
Date: 21st Oct 2025





www.host-appliances.com

HT001 (HOST1211DH)-HT127(HOST1212DS)-HT125 (HOST1215DS)-HT174 (HT1217DH)_EN_A5_v2_2025/11/05