

# HOST

## Contact grill

Instruction manual

### Model:

HT120 (HOST0541RR)

HT119 (HOST0542FF)

HT118 (HOST0543RF)

HT104 (HOST0551RR)

HT110 (HOST0552FF)



Read this instruction  
manual carefully  
before use

---

## Safety Instructions

---

- Position on a flat, stable surface.
- A service agent/qualified technician should carry out installation and any repairs if required. Do not remove any components on this product.
- Consult Local and National Standards to comply with the following:
  - Health and Safety at Work Legislation
  - BS EN Codes of Practice
  - Fire Precautions
  - IEE Wiring Regulations
  - Building Regulations
- **Caution! Hot surface!** The temperature of the heating surface and other accessible surface is very high during use. Touch the temperature control knob only.
- DO NOT immerse the appliance in water.
- DO NOT clean with jet/pressure washers.
- DO NOT move or carry the appliance when it is switched on.
- DO NOT leave the appliance unattended during operation.
- Always use oven gloves when cooking or carrying out any adjustments to the appliance.
- Where this appliance is to be positioned in close proximity to a wall, partitions, kitchen furniture, decorative finishes, etc., it is recommended that they be made of non-combustible material; if not, they shall be clad with suitable with non-combustible heat-insulating material, and the closest attention be paid to fire prevention regulations.
- Do not obstruct any ventilation openings in the appliance body.
- Always use the handle to lift the plate.
- Always switch off and disconnect the power supply to the appliance when not in use.
- This appliance must only be used in accordance with these instructions and by persons competent to do so.
- Keep all packaging away from children. Dispose of the packaging in accordance to the regulations of local authorities.

- If the power cord is damaged, it must be replaced by a recommended qualified technician in order to avoid a hazard.
- This appliance is not intended for use by persons (including children) with reduced physical, sensory or mental capabilities, or lack of experience or knowledge, unless they have been given supervision or instruction concerning the use of the appliance by a person responsible for their safety.
- Children should be supervised to ensure that they do not play with the appliance.
- HOST recommend that this appliance should be periodically tested (at least annually) by a Competent Person. Testing should include, but not be limited to: Visual Inspection, Polarity Test, Earth Continuity, Insulation Continuity and Functional Testing.
- HOST recommend that this product is connected to a circuit protected by an appropriate RCD (Residual Current Device).

---

## Installation

---

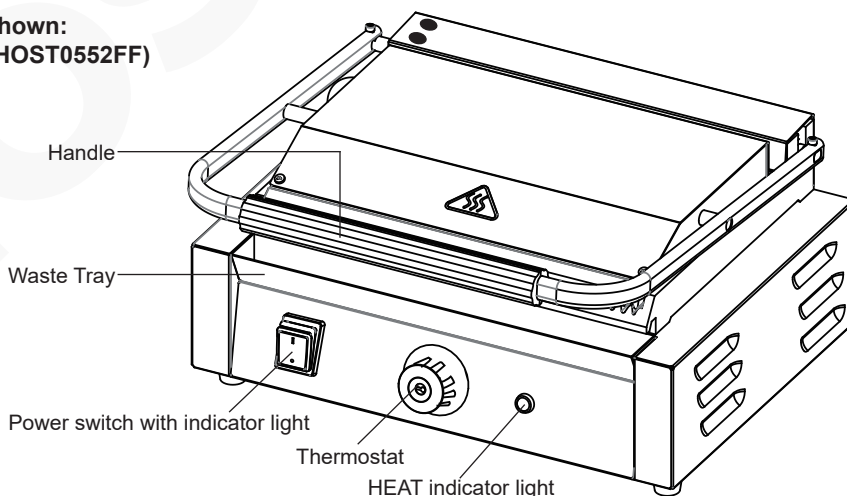
1. Place the unit on a heat-resistant surface. Avoid placing it on or close to flammable materials. Maintain a distance of 20cm (7 inches) between the appliance and walls or other objects for ventilation.
2. Keep the unit away from splashing water and countertop's edge.

---

## Operation

---

**Model shown:**  
**HT110 (HOST0552FF)**



## Cooking

**Note:** Before using for the first time, clean the cooking surface with warm soapy water. Let dry completely and ensure no water goes into the appliance inside.

**Note:** It is recommended the cooking surface be lightly oiled before cooking.

1. Close the plates.
2. Connect the appliance to the mains power supply.
3. Turn the appliance on. The power indicator light (green) illuminates.
4. Set the thermostat to the desired temperature (50°C-300°C). The HEAT indicator light (orange) turns On and the appliance begins to heat up.

**Note:** 200°C to 220°C is suitable for general cooking.

5. When the set temperature is reached, the HEAT indicator light turns Off.

**Note:** During use, the HEAT indicator light will cycle on/off, indicating the set temperature is being maintained.

6. Lift the upper plate and place the foodstuff on the lower plate.
7. Lower the upper plate.
8. **Turning off:** After use, set the thermostat to '0' position and power switch to 'O' position.

## Overheat protection

This appliance is featured with an overheat protection. Should the temperature exceed safe levels the appliance will automatically cut off power.

The thermal Cut-out switch is located on the rear of the appliance. To reset the appliance after a sufficient cool-down period:

1. Unscrew the reset switch cover.
2. Press the small reset switch down until it clicks, using a blunt pointed instrument.
3. The appliance is now reset and can be used as normal

## Cleaning, Care & Maintenance

### Warning:

**Always turn off and disconnect the appliance from the power supply before cleaning.**

**Always allow the appliance to cool before cleaning.**

If grease is permitted to accumulate, it will begin to carbonised into a hard substance that is extremely difficult to remove. To prevent this follow the cleaning steps below:

- Regularly remove excess grease or fat using a cloth dampened with warm soapy water.
- Take care when using scrapers to remove cooking residues as they can damage the cooking surface.
- Dry thoroughly after cleaning.

**For best performance, HOST recommend that the appliance is cleaned after each day of operation.**

**Failure to clean the appliance regularly may result in premature activation of the thermal cut-out switch.**

## Scraping

- After each use, scrape the appliance with a soft plastic or wooden scraper to remove excess fat and food.
- If there is an accumulation of burned fat or food, the cooking surface should be thoroughly scoured and re-seasoned.

### Caution:

**It is vital that the cooking surface is re-seasoned after scouring.**

**Do not use steel wool as it may leave shards that could contaminate food.**

## Waste Tray

- This appliance is featured with a waste tray to collect any liquid or fats that run off during cooking.
- At least once a day, remove and empty the waste tray before washing with warm soapy water. Do not allow the tray to overflow.

**Warning: DO NOT remove the tray during or immediately after use as the contents are still hot.**

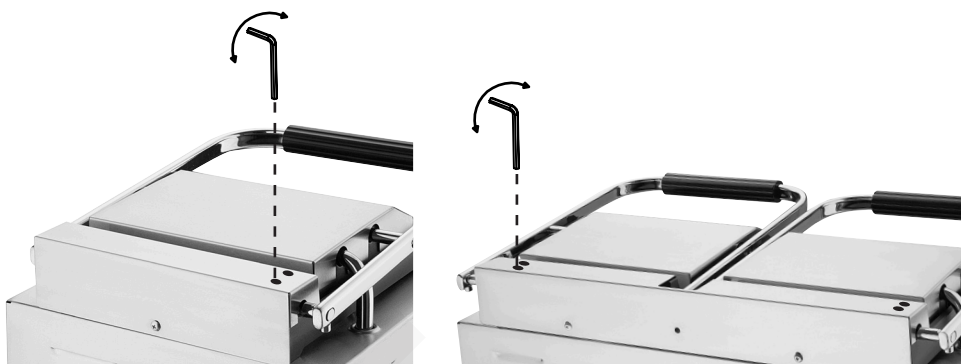
## Adjusting Top Plate Tension



**Note:** If top plate becomes loose/ stiff use the Allen key supplied to adjust the tension.

**HOST recommend the appliance is disconnected from the power supply and allowed to cool before any adjustments are made.**

1. Remove the rubber stoppers on the top of the rear cover.
2. Use the Allen key supplied to adjust the tension of the top plate. Turn clockwise to tighten, anti-clockwise to loosen.
3. Re-locate the rubber stoppers in place.



## Troubleshooting

A qualified technician must carry out repairs if required.

Fault	Probable Cause	Solution
The appliance is not working	The unit is not switched on	Check the unit is plugged in correctly and switched on
	Plug or lead is damaged	Replace plug or lead
	Fuse in the plug has blown	Replace the fuse
	Mains power supply fault	Check mains power supply
HEAT indicator light comes on but appliance does not heat up	Faulty element	Consult a qualified technician
	Faulty thermostat	Consult a qualified technician
	Thermostat set incorrectly	Check thermostat
Appliance slow to heat up	Cooking surface not clean	Clean cooking surface
	Faulty element	Consult a qualified technician
Surface flaking	Build up of carbonised food debris	Refer to "Cleaning, Care & Maintenance" section
No power	The thermal cut-out switch is activated	Wait until the unit cools down. Please check your machine is safe with no obvious damage and then press the re-set switch

---

## Service

---

Should your appliance have a fault, please visit the Service section of the HOST website:

<https://www.host-appliances.com/repairs>

---

## Technical Specifications

---

Model	Voltage	Power	Plate type	Net Weight (kg)	Dimensions (H x W x D) (mm)
HT120 (HOST0541RR) HT119 (HOST0542FF) HT118 (HOST0543RF)	220-240V~ 50/60Hz	2900W	Ribbed / Ribbed	26.1	200 x 570 x 310
Flat / Flat			25.7		
Ribbed / Flat			25		
HT104 (HOST0551RR) HT110 (HOST0552FF)		2200W	Ribbed / Ribbed	19.6	200 x 430 x 310
Flat / Flat			19.4		

Note: Due to our continuous improvement process, the product specifications are subject to change without notice.

---

## Electrical Wiring

---

This appliance is supplied with a 3 pin BS1363 plug and lead.

The plug is to be connected to a suitable mains socket.

This appliance is wired as follows:

- Live wire (coloured brown) to terminal marked L
- Neutral wire (coloured blue) to terminal marked N
- Earth wire (coloured green/yellow) to terminal marked E



This appliance must be earthed.

If in doubt consult a qualified electrician.

Electrical isolation points must be kept clear of any obstructions. In the event of any emergency disconnection being required they must be readily accessible.

---

## Compliance

---

The WEEE logo on this product or its documentation indicates that the product must not be disposed of as household waste. To help prevent possible harm to human health and/or the environment, the product must be disposed of in an approved and environmentally safe recycling process. For further information on how to dispose of this product correctly, contact the product supplier, or the local authority responsible for waste disposal in your area.



HOST parts have undergone strict product testing in order to comply with regulatory standards and specifications set by international, independent, and federal authorities.



All rights reserved. No part of these instructions may be produced or transmitted in any form or by any means, electronic, mechanical, photocopying, recording or otherwise, without the prior written permission of HOST. Every effort is made to ensure all details are correct at the time of going to press, however, HOST reserve the right to change specifications without notice.

# HOST

## Declaration of Conformity

We {Host} of {Host House, Newhouse Farm Industrial Estate, Mathern, Chepstow, NP16 6UP} hereby declare that the equipment is in conformity with the requirements of the following Regulations:

- **Low Voltage Directive (LVD) - 2014/35/EU**  
Electrical Equipment (Safety) Regulations 2016
- **Electro-Magnetic Compatibility (EMC) Directive 2014/30/EU - recast of 2004/108/EC**  
Electromagnetic Compatibility Regulations 2016 (S.I. 2016/1091)
- **Restriction of Hazardous Substances Directive (RoHS) 2015/863 amending Annex II to Directive 2011/65/EU**  
The Restriction of the Use of Certain Hazardous Substances in Electrical and Electronic Equipment Regulations 2012 (S.I. 2012/3032)
- **Regulation (EC) No 1935/2004- Food Contact Materials (FCM)**  
Regulation (EC) No 1935/2004 on Materials and Articles intended to Come into Contact with Food

We hereby declare that:  
Equipment Model number:

HT119(HOST0542FF)	Double Contact Grill – Flat/Flat Plates
HT120 (HOST0541RR)	Double Contact Grill – Ribbed/Ribbed Plates
HT118 (HOST0543RF)	Double Contact Grill – Ribbed/Flat Plates
HT104 (HOST0551RR)	Extra Large Contact Grill –Ribbed/Ribbed Plates
HT110 (HOST0552FF)	Extra Large Contact Grill – Flat/Flat Plates

is in conformity with the applicable requirements of the following documents:

Ref. No.	Edition/date
EN 60335-1	2012 +A11:2014 +A13:2017 +A1:2019 +A2:2019 +A14:2019 +A15:2021
EN 60335-2-38	2002 +A1:2008
EN 62233	2008
EN IEC 55014-1	2021
EN IEC 55014-2	2021
EN IEC 61000-3-2	2019 +A1:2021
EN 61000-3-3	2013 +A1:2019 +A2:2021

I hereby declare that the equipment named above has been designed to comply with the relevant sections of the above referenced specifications and is in accordance with the requirements of the Regulations:

Signed by:

Signed by:  
  
AB6DB7656FFB441...

Full Name  
Title:

Ashley Hooper  
Group Head of Product  
Quality & Compliance  
Bristol, United Kingdom  
05<sup>TH</sup> Nov 2025

Location:  
Date:





[www.host-appliances.com](http://www.host-appliances.com)

HT120 (HOST0541RR)\_HT119 (HOST0542FF)\_HT118 (HOST0543RF)\_HT104 (HOST0551RR)\_  
HT110 (HOST0552FF)\_EN\_A5\_v2\_2025/11/06