

HOST

Display Fridge Instruction manual

Model:
HT248



Read this instruction
manual carefully
before use

Safety Instructions

- Position on a flat, stable surface.
- A service agent/qualified technician should carry out installation and any repairs if required. Do not remove any components or service panels on this product.
- Consult Local and National Standards to comply with the following:
 - Health and Safety at Work Legislation
 - BS EN Codes of Practice
 - Fire Precautions
 - IEE Wiring Regulations
 - Building Regulations
- DO NOT immerse in water, or use steam/jet washers to clean the unit.
- DO NOT cover the appliance when it is operating.
- Always carry, store and handle the appliance in a vertical position.
- Never tilt the appliance more than 45° from the vertical.
- Not suitable for outdoor use.
- Keep all packaging away from children. Dispose of the packaging in accordance with the regulations of local authorities.
- If the power cord is damaged, it must be replaced by a recommended qualified technician in order to avoid a hazard.
- This appliance is not intended for use by persons (including children) with reduced physical, sensory or mental capabilities, or lack of experience or knowledge, unless they have been given supervision or instruction concerning the use of the appliance by a person responsible for their safety.
- Children should be supervised to ensure that they do not play with the appliance.

- HOST recommend that this appliance should be periodically tested (at least annually) by a Competent Person. Testing should include, but not be limited to: Visual Inspection, Polarity Test, Earth Continuity, Insulation Continuity and Functional Testing.
- HOST recommend that this product is connected to a circuit protected by an appropriate RCD (Residual Current Device).
- Bottles that contain a high percentage of alcohol must be sealed and placed vertically in the appliance.



Warning: Risk of Fire / flammable materials

- The refrigerant gas contained in this appliance is isobutene (R600a), which is low-polluting but flammable.
- Do not store explosive substances such as aerosol cans with a flammable propellant in this appliance.

Warning: Keep all ventilation openings clear of obstruction. Unit should not be boxed in without adequate ventilation.

- **Warning:** Do not use mechanical devices or other means to accelerate the defrosting process, other than those recommended by the manufacturer.
- **Warning:** Do not damage the refrigerant circuit.
- **Warning:** Do not use electrical appliances inside the food storage compartments of the appliance.

Installation

Note: Not for use in vans or trailers, food trucks or similar vehicles.

Note: If the unit has not been stored or moved in an upright position, let it stand upright for approximately 12 hours before operation. If in doubt allow to stand.

1. Remove the appliance from the packaging and the protective film from all surfaces.
2. Avoid positioning the cooler in direct sunlight or damp areas.
3. To optimize performance and longevity, ensure a minimum clearance of 2.5cm is maintained between the unit and walls and other objects, with a minimum 20cm clearance on the top. **NEVER LOCATE NEXT TO A HEAT SOURCE.**
4. If necessary, adjust the screw legs of the cooler to make it level.

WARNING: When positioning the appliance, ensure the supply cord is not trapped or damaged.

WARNING: Do not locate multiple portable socket-outlets or portable power supplies at the rear of the appliance.

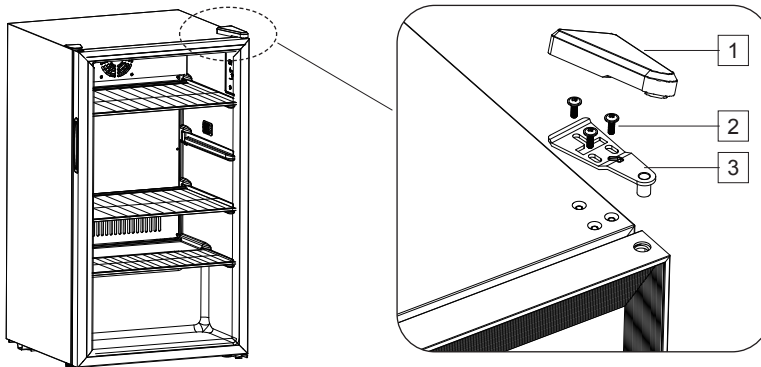
Note: Before using the appliance for the first time, clean the shelves and interior with soapy water then dry well.

Reversing the Door

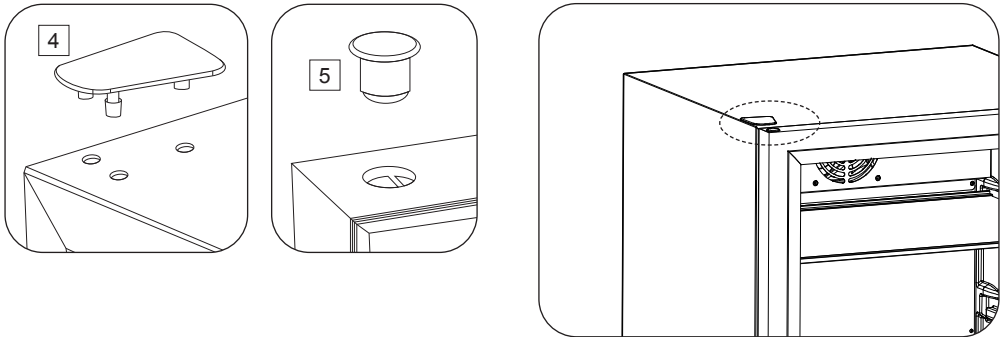
Depending on the location of the appliance, it may be necessary to change the direction the door of the cooler opens by changing the side of the door handle.

The door is opened from left side originally. To reverse the door handle:

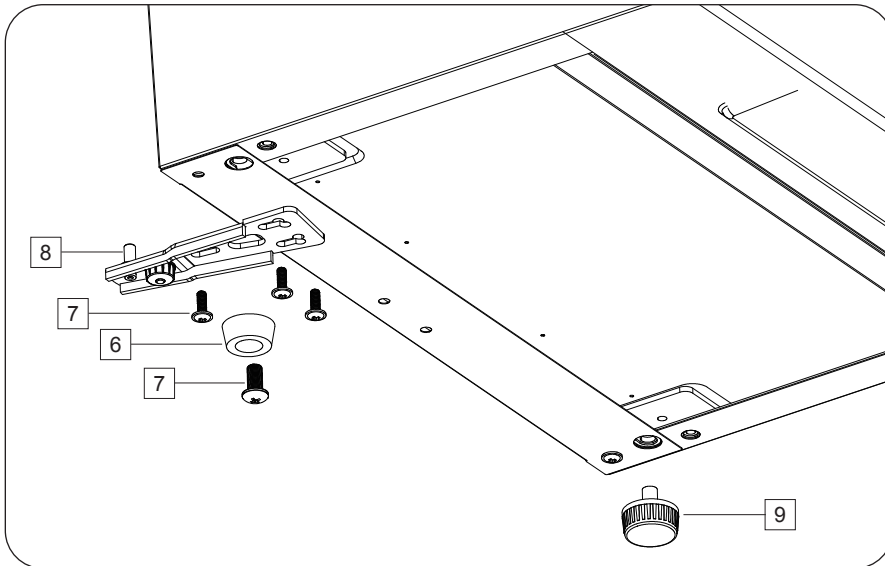
1. Ensure the appliance is disconnected from the power supply.
2. Remove the hinge cover (1), screws (2) and upper hinge (3) from the right top.



3. Lift the door upward to remove, then set it aside safely.
4. Remove the decoration cover (4) and cap (5) from the left top.



5. Tilt the appliance back slightly and prop it securely. The appliance must not be tipped back by more than 45 degrees.
 - Remove the foot (6), screws (7) and lower hinge (8) from the right bottom.
 - Remove the screw foot (9) from the left bottom.
 - Fix the lower hinge (8) on the left bottom with screws (7), then mount the foot (6) in place.
 - Mount the screw foot (9) on the right bottom.
 - Return the appliance to the upright position. Reverse the door and lower it onto the lower hinge.
 - Fix the upper hinge (3) on the left top with screws (2), then mount the hinge cover (1).



6. Mount the decoration cover (4) and cap (5) on the right top.
7. Check that the door is aligned vertically and horizontally to ensure proper opening and closing.

Operation

Note: the fridge should be placed in an area where the ambient temperature is between 16°C-32°C.

- When using the fridge for the first time, or re-starting it after a long period of time, there may be a few degrees variance between the selected temperature and what is shown on the display. Once the fridge has been switched on for a few hours, this should rectify itself.
- If the unit is unplugged, has lost power or been turned off, wait 3 to 5 minutes before restarting the fridge.

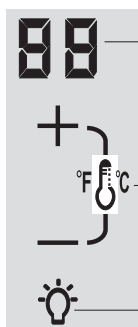
Control Panel

The controller is located inside the cabinet.

Note:

When the surrounding temperature is 32°C and the fridge is half-loaded, it will take around 15 hours to reduce the inner temperature from 32°C to 5°C.

It is recommended to set the fridge at 5°C for optimal storage. If the set temperature higher than 5°C, the energy consumption will drop. If lower than 5°C, the energy consumption will rise.



Display

Up / Down key:

- Press to increase / decrease temperature (Range: 2°C/36°F~20°C/68°F);
- Press and hold both keys to switch between Fahrenheit and Celsius

Light switch: Press shortly to turn light on/off

- Please refer to the following table to select the suitable temperature setting. Note: Setting the temperature too high can cause the beverage to spoil, and setting the temperature too low can waste electricity.

The chart below indicates the ideal storage temperatures for different types of wine and beverage:

°C	°F	Wine style	°C	°F	Beverage style
9	66	Armagnac, Brandy, Cognac	12	53	Water
18	64	Full bodied red wines, Shiraz	10	50	Black Ale
17	62	Tawny Port	8	46	Juice
15	59	Medium bodied red wines	7	45	Sour Beers
14	57	Amontillado Sherry	7	45	Pale Ale
13	55	Light bodied red wines	7	45	Dark Lagers
12	54	Full bodied white wines	6	43	Iced Coffee
11	52	Medium bodied white wines	5	42	Premium Lagers
10	50	Rosé, Light bodied white wines	4	40	Wheat Beers
9	48	Vintage Sparkling	3	38	Light, Pales Lagers
8	46	Fino sherry	3	38	Coca-Cola
7	45	Non Vintage Sparkling	2	35	Dairy

- This appliance is intended to operate in ideal climates where the maximum temperature and humidity are 25°C and 60% respectively.

Display stability

Celsius (°C) mode	When the temperature measured by the temperature probe is within $\pm 1^{\circ}\text{C}$ of the set temperature, the display will show the set temperature value
Fahrenheit (°F) mode	When the temperature measured by the temperature probe is within $\pm 2^{\circ}\text{F}$ of the set temperature, the display will show the set temperature value

Forced defrost function

When working every 8 hours, the appliance will start an automatic defrost cycle.

Memory function

With the memory function, all previous settings will be resumed after restarting the appliance.

Technical Specifications

Note: Due to our continuing program of research and development, the specifications herein may be subject to change without notice.

Model	Voltage	Power	Current	Refrigerant	Temp. Range	Dimensions H x W x D mm	Net Weight (kg)
HT248	220-240V~ 50Hz	85W	0.6A	R600a/21g	2-20°C	840 x 474 x 440	26

Maximum shelf load: 10kg

Impact of temperature settings on food waste:	This appliance shall be operated in its designated operating range to reduce food waste from spoilage
Ordering spares parts:	To order spare parts, please visit the link below: www.host-appliances.com Then type the relative item code and Spares
Minimum period of spares parts to be available:	Door handles, door hinges, knobs, dials and buttons, door gaskets, peripheral trays, baskets and racks for storage, as appropriate to the appliance, will be made available to both end users and professional users for a minimum of eight years after the last unit of the model is placed on the market. A broader selection of parts will also be made available to Professional users for this period
To find the model information on the product:	The Model Identifier can usually be found on the inside wall and on the reverse of the unit.

Cleaning, Care & Maintenance

- Always switch off and disconnect the power supply before cleaning.
- Warm, soapy water is recommended for cleaning. Cleaning agents may leave harmful residues.
- Periodically clean the bottom of the cooler compartment to remove any build-up of condensation.

Refrigerating tips:

- Condensation and ice will form with frequent and prolonged opening of the doors.
- Operating outside of the recommend temperature range and placing next to a heat source will also increase the amount of ice and internal/external condensation. If external condensation occurs wipe the surface down with a cloth.
- Excessive ice will result in longer running times that will increase energy consumption and increase the deterioration of components.
- If the gasket or seal is damaged or deformed, energy consumption will increase. To restore efficiency, replace gasket.

Service

Should your appliance have a fault, please visit the Service section of the HOST website:

<https://www.host-appliances.com/repairs>

Troubleshooting

A qualified technician must carry out repairs if required.

Fault	Probable Cause	Solution
The appliance is not working	The unit is not switched on	Check the unit is plugged in correctly and switched on
	Plug or lead is damaged	Replace plug or lead
	Fuse in the plug has blown	Replace the fuse
	Mains power supply fault	Check mains power supply
Appliance is noisy or works intermittently	Appliance is not level	Adjust the feet to level the appliance
	Appliance in contact with walls or other objects	Keep the unit away from walls and other objects
Fridge cabinet is not cold enough	Temperature set incorrectly	Check temperature and reset if necessary
	External environment may require colder temperature	Check temperature and reset if necessary
	The door is opened too often	Only open when necessary
	Door seal is worn	Consult a qualified technician
Light is not working	Light key is not pressed	Press the light key
	Bulb has blown	Consult a qualified technician
Door will not close properly	Appliance is not level	Adjust the feet to level the appliance
	Shelves are out of position	Check all shelves are properly inserted
	Door seal is dirty	Wipe clean with a damp cloth
Error code "EE" on display	Temperature probe is short-circuited or disconnected	Consult a qualified technician
Error code "LL" on display	Temperature measured by the temperature probe is lower than 0°C (Display range: 0~37°C)	Consult a qualified technician
Error code "HH" on display	Temperature measured by the temperature probe is higher than 37°C (Display range: 0~37°C)	

Electrical Wiring

The appliance is supplied with a 3 pin BS1363 plug and lead.

The plug is to be connected to a suitable mains socket.

The appliance is wired as follows:

- Live wire (coloured brown) to terminal marked L
- Neutral wire (coloured blue) to terminal marked N
- Earth wire (coloured green/yellow) to terminal marked E

This appliance must be earthed.



If in doubt consult a qualified electrician.

Electrical isolation points must be kept clear of any obstructions. In the event of any emergency disconnection being required they must be readily accessible.

Disposal

EU regulations require refrigeration product to be disposed of by specialist companies who remove or recycle all gasses, metal and plastic components.

Consult your local waste collection authority regarding disposal of your appliance. Local authorities are not obliged to dispose of commercial refrigeration equipment but may be able to offer advice on how to dispose of the equipment locally.

Compliance

The WEEE logo on this product or its documentation indicates that the product must not be disposed of as household waste. To help prevent possible harm to human health and/or the environment, the product must be disposed of in an approved and environmentally safe recycling process. For further information on how to dispose of this product correctly, contact the product supplier, or the local authority responsible for waste disposal in your area.



HOST parts have undergone strict product testing in order to comply with regulatory standards and specifications set by international, independent, and federal authorities.



HOST products have been approved to carry the following symbol:

All rights reserved. No part of these instructions may be produced or transmitted in any form or by any means, electronic, mechanical, photocopying, recording or otherwise, without the prior written permission of HOST.
Every effort is made to ensure all details are correct at the time of going to press, however, HOST reserve the right to change specifications without notice.

HOST

Declaration of Conformity

We {Host} of {Host House, Newhouse Farm Industrial Estate, Mathern, Chepstow, NP16 6UP} hereby declare that the equipment is in conformity with the requirements of the following Regulations:

- **Low Voltage Directive (LVD) - 2014/35/EU**
Electrical Equipment (Safety) Regulations 2016
- **Electro-Magnetic Compatibility (EMC) Directive 2014/30/EU - recast of 2004/108/EC**
Electromagnetic Compatibility Regulations 2016 (S.I. 2016/1091)
- **Restriction of Hazardous Substances Directive (RoHS) 2015/863 amending Annex II to Directive 2011/65/EU**
The Restriction of the Use of Certain Hazardous Substances in Electrical and Electronic Equipment Regulations 2012 (S.I. 2012/3032)

We hereby declare that:
Equipment Model number:

HT248 **Slimline Undercounter Display Fridge Black**

is in conformity with the applicable requirements of the following documents:

Ref. No.	Edition/date
EN 60335-1	2012 +A11:2014 +A13:2017 +A1:2019 +A2:2019 +A14:2019 +A15:2021
EN IEC 60335-2-24	2022 +A11:2022
EN 62233	2008
EN IEC 55014-1	2021
EN IEC 55014-2	2021
EN IEC 61000-3-2	2019 +A1:2021
EN 61000-3-3	2013 +A1:2019 +A2:2021

I hereby declare that the equipment named above has been designed to comply with the relevant sections of the above referenced specifications and is in accordance with the requirements of the Regulations:

Signed by:

Signed by:

AB6DB7656FFB441...

Full Name: Ashley Hooper
Title: Group Head of Product
Quality & Compliance
Location: Bristol, United Kingdom
Date: 01TH Jul 2025





www.host-appliances.com

HT248_EN_A5_v1_2025/11/18