



## Air In Canopies

Complete with internal fans

**AITT1875-IFR / AITT1875-IFT**

**AITT2175-IFR / AITT2175-IFT**

**AITT2475-IFR / AITT2475-IFT**



British Built for Purpose.





# Welcome to Parry

Parry is one of the UK's foremost manufacturers of high-quality Stainless Steel Fabricated Products with a 40-year heritage rooted in British craftsmanship.

At Parry, quality and service are second nature. Striving to exceed our customers' expectations is not just our motto; it's the very heartbeat of our business. Our commitment to our customers is reflected in the **Parry 4E Standard Inspection Body** stating that all our products are:



**Easy to use**



**Easy to maintain**



**Easy to clean**



**Easy to repair**

Our ranges of Stainless Steel Products have been specifically designed with the consumer in mind and are tailored and compliant to your specific industry sector. All our products are 4E Compliant and meet EU & UK regulations, where applicable. The Parry brand stands for quality, reliability and value.

Our British designed products have been created by our expert in-house development team and manufactured to exacting standards using Industry specified grade of European stainless steel and holding relevant EU & UK certification for all product.

ISO9001 certification and continual investment in the training and development of our highly skilled, artisan workforce means that our clients have genuine peace of mind that they are buying hand crafted, quality products supported by five-star customer service. All Parry products meet EU regulations for their respective sector.

We are LEAN manufacturers, minimising waste, maximising productivity. We are proud to run an operation that is committed to minimising our impact on the environment.

Our equipment and furniture are manufactured in our 45,000 sq ft manufacturing facility in Draycott, Derbyshire in England's industrial heartland. Products are made to order if not available in our stocked items which means you can choose from 600 products, offering over 3,500 variants, with short lead times to suit your specific needs. That means you get exactly what you need when you need it.

Our product information can be found here, in our brochure or on our website [www.parry.co.uk](http://www.parry.co.uk).

You have my personal commitment that Parry will exceed your expectations. Should you have any questions please contact your distributor. Alternatively, our customer services team will be happy to help you on **01332 875544**.

**Mark Banton MBA**  
**Managing Director**



# Contents

---

Contents.....	1
Product Overview .....	2
Safety Instructions .....	3
Installation Instructions .....	3-9
Cleaning Instructions .....	9-10
Maintenance Instructions.....	11
Fault Finding .....	12
Service Information.....	13
Speed Controller Instructions (including wiring) .....	14-16
Fan Motor Wiring Diagram.....	17
Parts List .....	18
Warranty Information.....	19
Disposal & Recycling .....	20






Parry Catering Equipment (Midlands) Ltd, Town End Road, Draycott, Derby, DE72 3PT.  
Sales Tel: 01332 875544








## Product Overview

The Parry AITT range of canopies has been designed for large overhang of 1200 and complete with air in facility. These come with a complete weather louvred filter box that is fitted to the outside wall.

The Parry canopy range benefits from:

-  Practical range of sizes to suit most kitchens
-  Good performance extraction fans
-  Quality stainless steel construction
-  Simple to specify kit of parts to suit most extraction requirements.
-  Parts warranty

	AITT1875	AITT2175	AITT2475
External Dimensions (mm)	1800 (w)	2100 (w)	2400 (w)
	x 1200 (d) x 750 (h)		
Removable drip tray	Yes		
Fans packs available	Internal		
Filters	All units provided with baffle filters		
Construction	Stainless steel		
Power Requirements (Extract fan)	600W 230V 50Hz ~ 2.6A		
Power Requirements (Inlet fans)	<b>Each Fan</b> 150W 230V 50Hz ~ 0.7A <b>Total Load</b> 300W 230V 50Hz ~ 1.3A		
Weight (kg)	108	125	135
Filter Box Dimensions (mm)	550 (w) x 540 (h) x 215(d)		
Filter Box Weight (kg)	14		






-  Design and aesthetic appeal
-  Performance
-  Power
-  Functionality
-  After sales support



## Safety Instructions

---

Please read these instructions before you attempt to use the equipment. Keep these instructions for future reference.

-  To prevent shocks, the canopy, must be earthed.
-  To avoid scratching the highly polished exterior surface of this equipment whilst in transit, the protective film on the exterior surfaces has NOT been removed.
-  It is **IMPORTANT** that this protective film is peeled off before the equipment is used.
-  Ensure that vents intended to provide air flow in and around the unit are not obstructed.
-  Ensure the appliance is isolated from the power supply before installing, cleaning or maintaining the appliance



## Installation Instructions

---

### Specifying Instructions

Please consult HVCA Specification DW/172 and current local regulations, when specifying a canopy for a room.

Parry cannot specify extraction equipment or ducting due to the numerous factors that influence the selection of equipment for a certain environment.

Please ensure that you have checked that the canopy you select will have adequate air flow to extract the gases from the equipment that you propose to fit underneath it. If in doubt, please seek professional advice.

All Parry canopies are manufactured from high quality stainless steel. The extraction canopy itself will be supplied with baffle filters, an easy to clean drip tray and Air in chamber filter box.



## Installation Instructions

---

**All gas appliances and gas interlock systems must be installed and commissioned by a registered gas safe fitter. Electrical products, and the wiring of fans and speed controllers must be fitted by an electrician. All ventilation ducting must be installed to comply with current standards and building regulations.**

The canopy kits include: -

- Canopy (Rear Exit AITT####-IFR/ Top Exit AITT####-IFT)
  - 2 x 400mm Duct Flanges
  - 2 X 200mm Duct Flanges (1 connected to the Filter Box)
  - 2 x Speed Controllers
  - 2 x 16mm Cable Gland
  - 1 x Filter Box complete with Weather Louvre
- (Please note ducting is not included)***

The centrifugal fan used within the internal fan packs draws air from both sides, so to work most effectively it should be located centrally to give an even draw across the length of the canopy.

An earth tag has been provided and we would recommend that all units are earthed.

Information about the rating of the fan can be found on a label on the left inner side of the canopy. We would recommend you use this label to record the information relating to the canopy installation as it is commissioned.

Internal canopy packs come complete with the internal fan, pair of 400mm flanges, a pair of 200mm flanges and 2 x speed controllers. ***(Please note ducting is not included)***

Parry does not supply any ducting and it is the responsibility of the installer to ensure that extraction ducting complies with all current standards. External weather louvered panels are not supplied as standard but can be bought separately from Parry. Parry can also supply reducers if you want to change the diameter of ducting leading away from the fan.

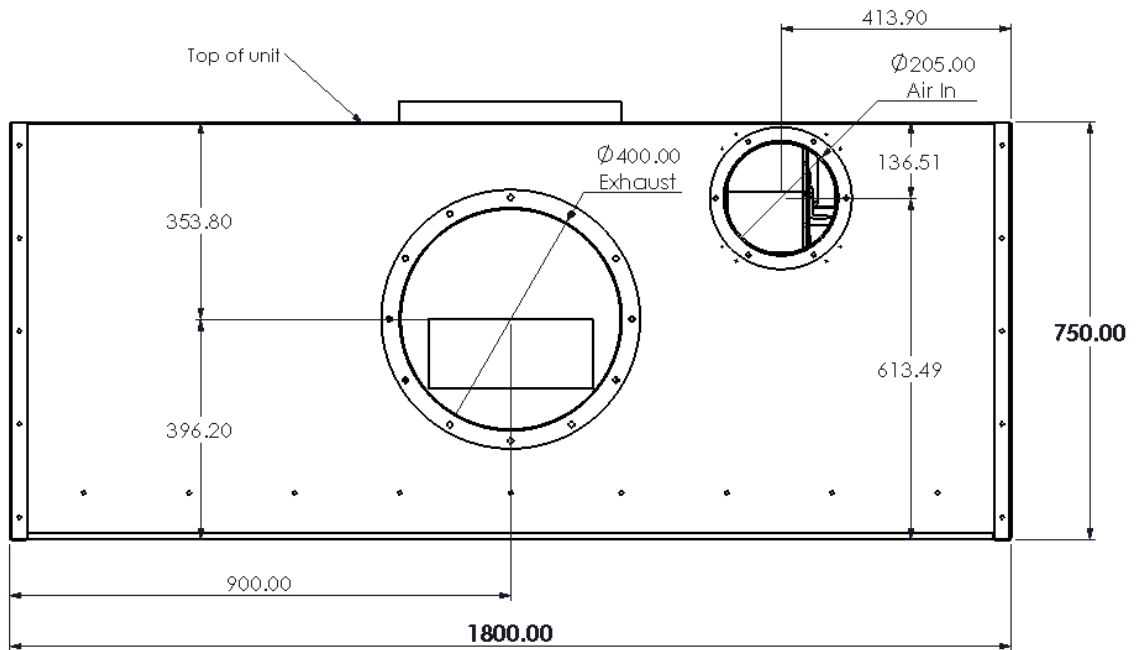


# Installation Instructions

Holes positions required for rear inlet / extract.

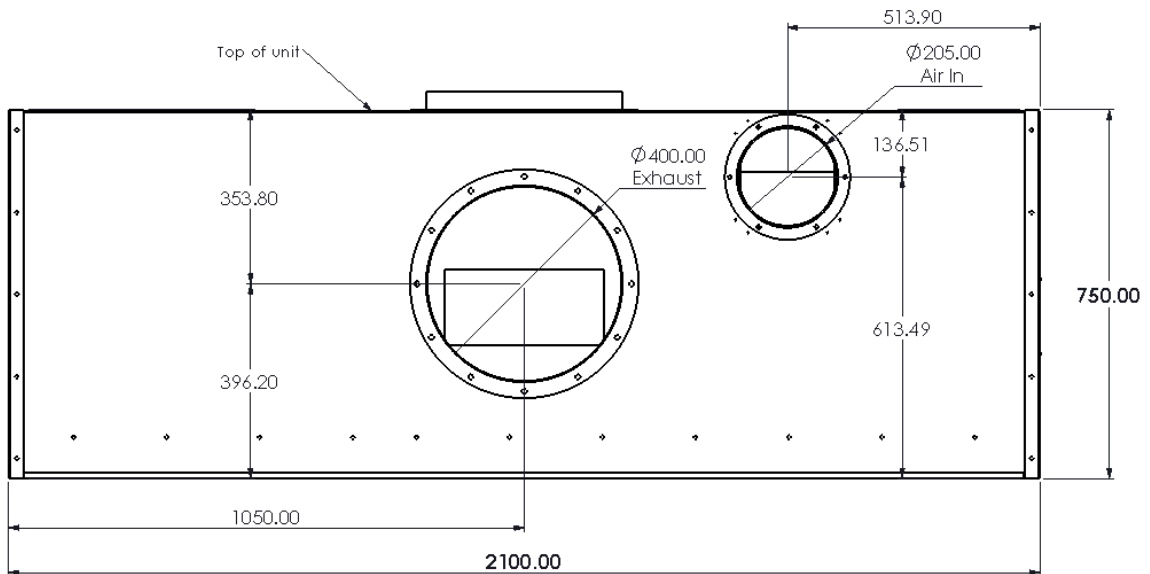
**AITT1875-IFR**

## REAR VIEW



**AITT2175-IFR**

## REAR VIEW



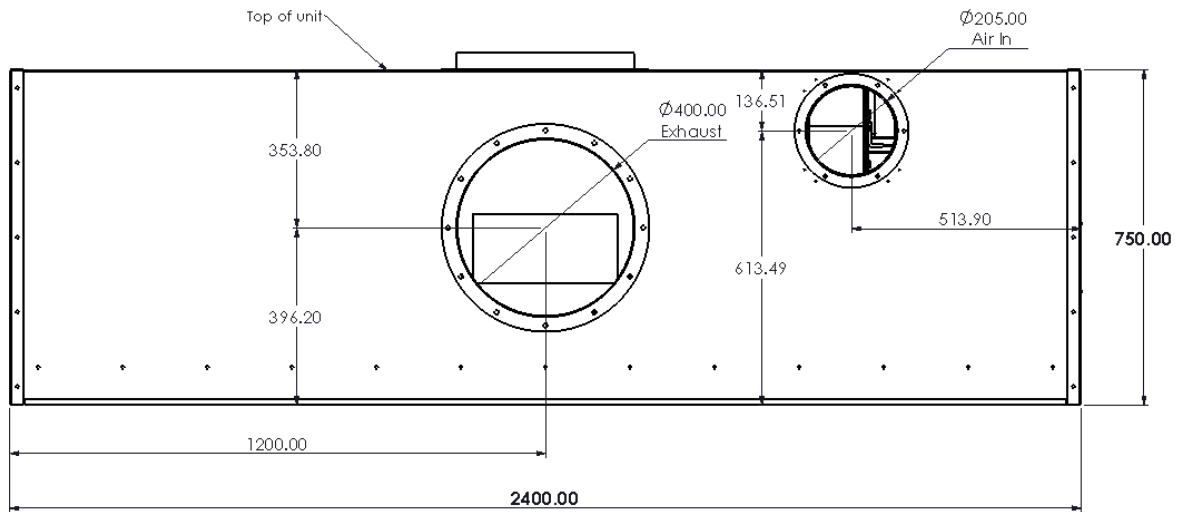


# Installation Instructions

Holes positions required for rear inlet / extract.

## AITT2475-IFR

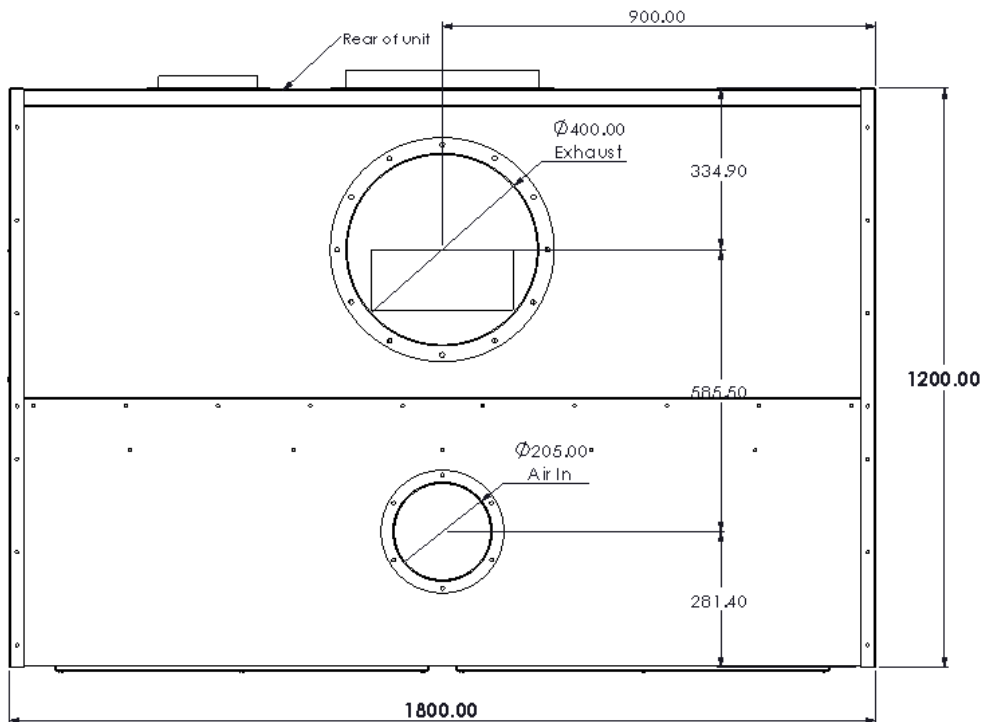
### REAR VIEW



Holes positions required for top inlet / extract.

## AITT1875-IFT

### TOP VIEW

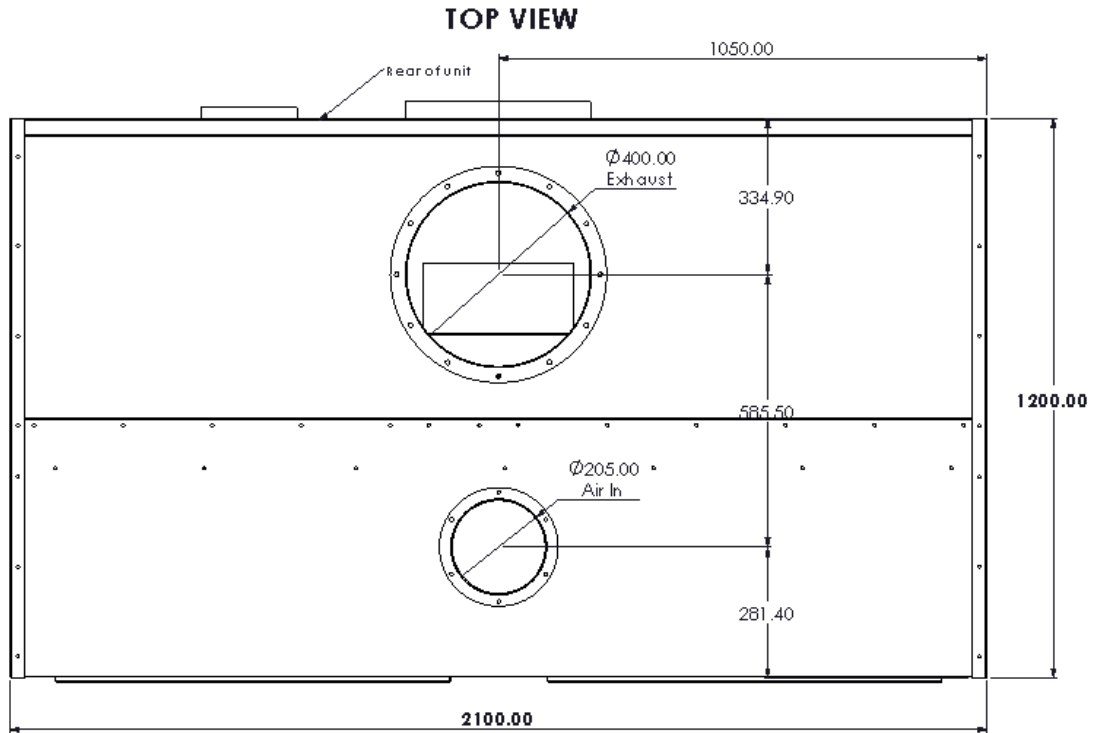




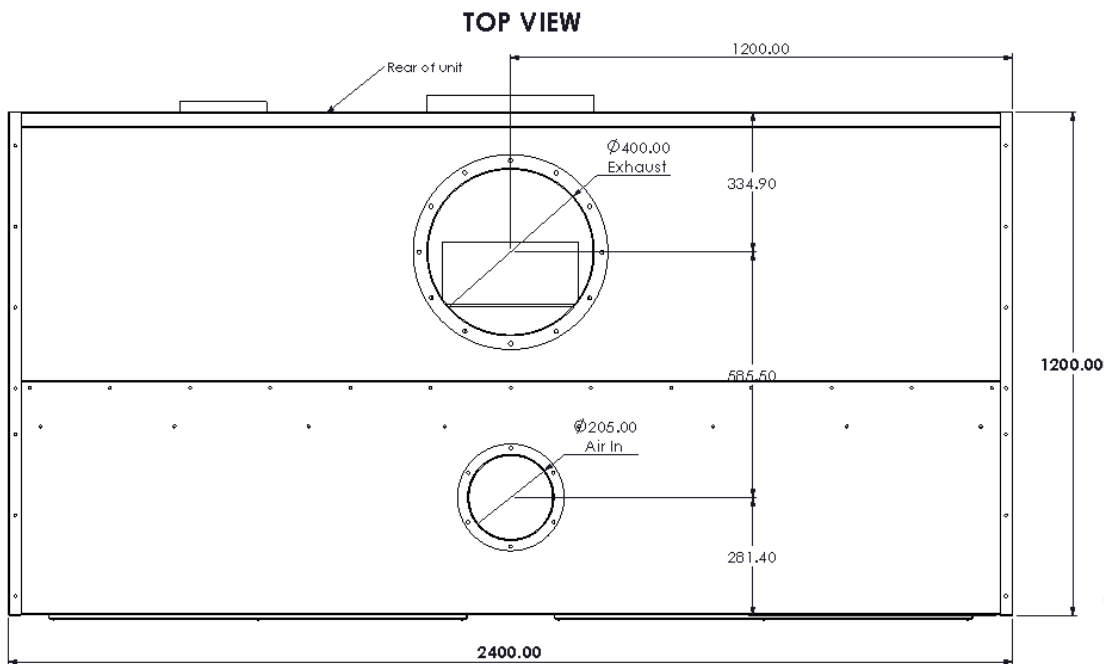
# Installation Instructions

Holes positions required for top inlet / extract.

## AITT2175-IFT



## AITT2475-IFT












## Installation Instructions

---

### Hanging the canopy on a wall

The method chosen to hang the canopy to a wall or ceiling will depend greatly on the type and material of the wall or ceiling. It is the responsibility of the installer to check the structure is strong enough for the weight of the canopy and to use appropriate fixings.

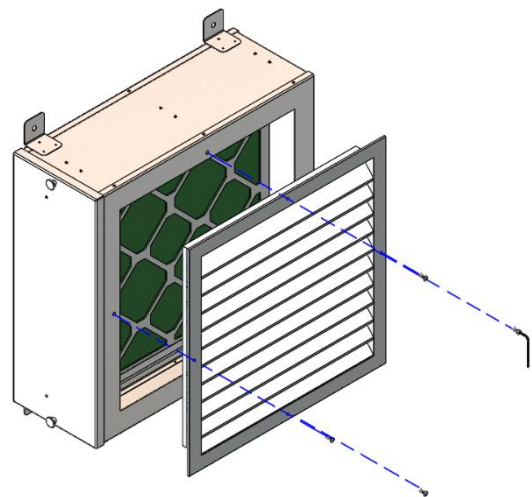
If a canopy has been supplied on a stand or mounted to a table, it may still need to be tied to a wall or ceiling for rigidity.

-  Choose a suitable position for your unit taking into consideration ducting, the location of unit's underneath it, and current standards.
-  Do not butt the unit up against another unit which will get hot.
-  Do not let the position of the unit blank off any ventilation vents on any other adjacent units.
-  Remove all protective film and packing material.
-  Holes can be drilled through the back or top of the canopy to screw directly to a wall or ceiling. In some circumstances it may be beneficial to run a baton along the wall for the unit to sit onto, as well as screwing directly into the wall.
-  If in the case of a condensate canopy the unit may be suspended from the ceiling with chain. Take steps to prevent the canopy from swaying, which could happen as doors into the room are opened and closed.
-  Please note that on canopies a fat collection tray may be situated to one side of the unit, and on condensate canopies a drain valve is located on one corner. To help the liquid flow into the drain or tray, it is best to fix the unit at a slight angle.

### **Air In Filter Box**

The position of the weather louvre can be rotated so that the access of the filter is accessible from left or right.

Remove the screws using an allen key from the weather louvre and rotate and replace the screws.





## Installation Instructions

---

Air in fans, are accessible by removing the inspection covers under the front of the canopy. The capacitors are prewired to each fan and each of these fans are connected into a junction box.

Only wiring would be needed to link from the terminal block thru 16mm gland (which needs to be positioned when being installed) to one of the speed controllers.

See wiring Diagram for speed controller on pages 14-17.



## Cleaning Instructions








---

### Canopy

#### IMPORTANT NOTICE

**Ensure power is turned off before cleaning**

The appliance should be cleaned after every use and the drip trays should be emptied as and when they fill up.

-  Allow canopy and any equipment sited below, to cool down before draining or cleaning the canopy.
-  Turn off the mains power.
-  Remove baffle filters and clean in hot soapy water.
-  Wipe down the channel that the baffle filters sit in with soapy water.
-  If the canopy contains an internal fan this must be cleaned regularly to avoid grease build up on the fan blades that will cause the fan to become inefficient and noisy.
-  Stainless steel cleaners maybe used on the canopy but cleaning instructions on the product must be adhered to.
-  Never clean the unit with water jets.








## Cleaning Instructions

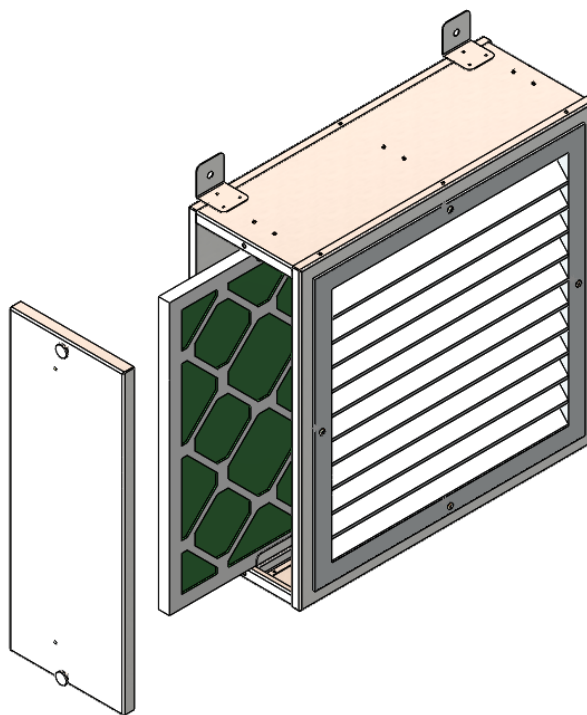
---

### IMPORTANT NOTICE

**Ensure power is turned off before cleaning**

#### **Filter Box**

-  The filter in the filter box will need checking at regular intervals and more during autumn / winter months due to excessive leaves in the air that could be drawn in during operation.
-  To replace the dust filter, remove the 2 thumb screws that hold the cover on.
-  Slide the dust filter out and clean away any debris that may have built up inside.
-  If the filter is blocked, then replace with new.
-  Refit cover and secure the thumb screws.







## Fault Finding

---

Fault	Check	Solution
<b>Canopy not extracting</b>	The unit has been installed by a professional and is connected to the mains	Turn on mains power
	Canopy is the correct size for the equipment that has been sited below it	Seek professional advice or see DW/172 Guidelines
<b>Fan extraction is not very strong</b>	Check the setting of the speed controller	Adjust if necessary
	Check that the fan is clean and that a build-up of grease on the fan blades is not preventing them from turning efficiently	Clean fan
	Ensure there is nothing blocking the filters or ducting	Remove blockage
	Fan positioned incorrectly	Move fan to correct position
	Fan not wired correctly	Wire fan in accordance with the wiring guide provided
<b>Fan is noisy</b>	Check that the fan is clean and that a build-up of grease on the fan blades is not preventing them from turning efficiently	Clean fan



## Service Information

---

### Enhanced 1 Year Warranty

Parry Catering Equipment (Midlands) Ltd offer an enhanced warranty of an extra one year (including parts and labour) on all of the Parry manufactured fabrication products. To take advantage of this you should register your warranty by logging onto the company website and filling out our simple form. [www.parry.co.uk/the-parry-warranty](http://www.parry.co.uk/the-parry-warranty)

If you have any issues with your product and wish to request a warranty call you can contact our friendly team who will organize a Parry approved service engineer to attend and fix your problem.

All warranty requests can be sent to [warranty@parry.co.uk](mailto:warranty@parry.co.uk) alternatively call our warranty department for technical assistance on **01332 875544**





# Speed Controller Instructions

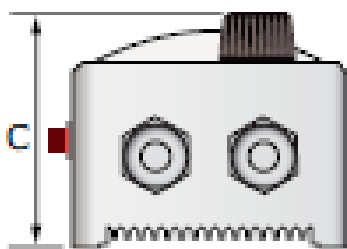
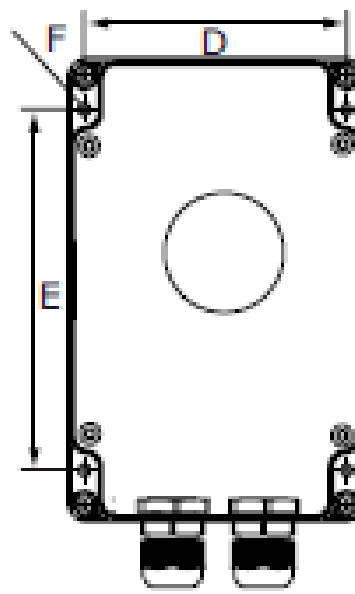
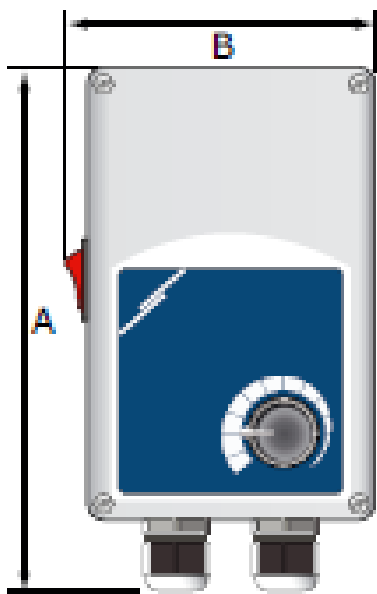
For model CONTRE6-A

## Technical Data

Code	Current Range	Fuse
<b>CONTRE6-A (ITL-9-60-DT)</b>	0.5-6.0A	10.0A



Code	A	B	C	D	E	F
<b>CONTRE6-A</b>	205mm	124mm	97mm	102mm	140mm	46



Enclosure: Plastic R-ABS, UL94-VO, grey RAL 7035, IP54

Max ambient temperature: 35degrees centigrade

For indoor use only, non-condensing

The electronic speed controller of these series control the speed of single phase (230 VAC – 50 HZ) voltage controllable motors by varying the supplied voltage through phase angle control.

**Parry-Brand Built for Purpose**



## Speed Controller Instructions





---

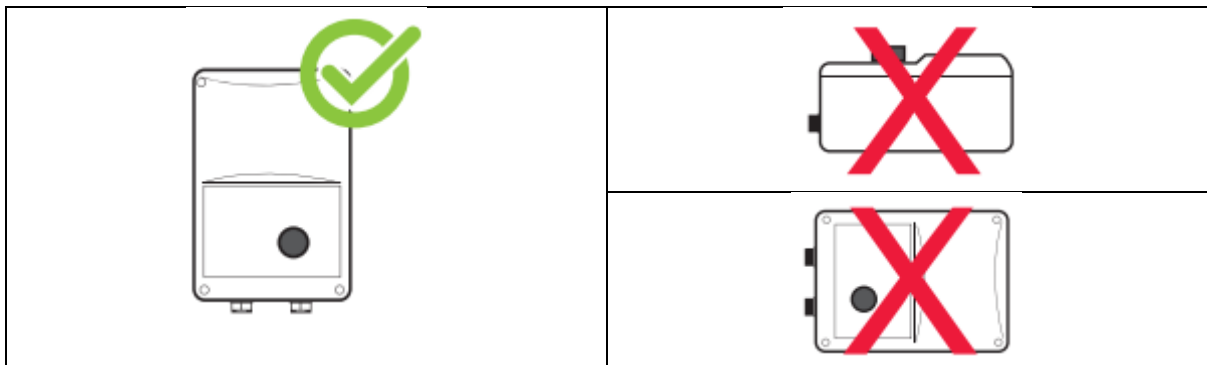
There is a potentiometer and a separate ON/OFF switch with built. The minimum speed allowed can be adjusted internally with a little trimmer (Factory pre-set = 45% o Us). The terminal board has a supplementary connection to bypass the ON/OFF switch (automatic start) or to branch off 230V not controlled (three wire motor connection, valve, lamp, damper, etc...)

There are two working modes internally selectable by placing or removing the jumper on the PCB (See illustration)

**Kickstart:** the motor will always start (or reset) at max speed for 8 seconds, after that the motor speed automatically follows the position of the potentiometer.

**Normal start:** the motor starts according to the position of the potentiometer.

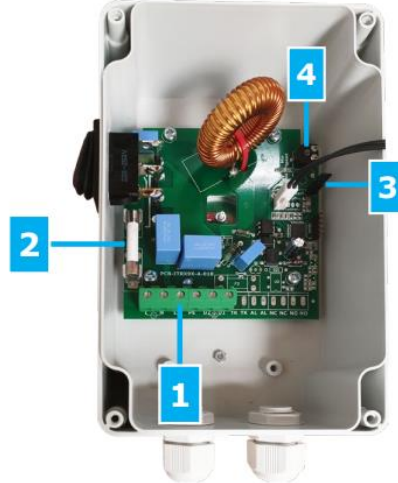
-  Make sure that the ITR-9 controller is switched off.
-  Unscrew the front cover and open the enclosure. Mind the wires that connect the potentiometer with the printed circuit board.
-  Fix the unit to the wall or panel using the provided screws and dowels. ***(Mind the correct mounting position and unit mounting)***
-  Connect mains, motor(s) and earth cables of the proper diameter to the terminals according to the scheme below.

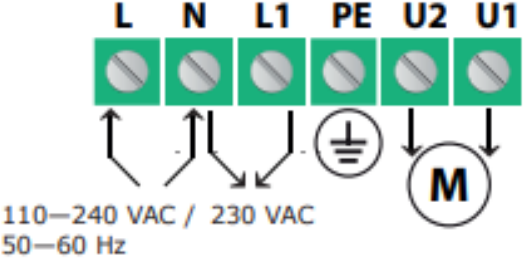








# Speed Controller Instructions (Wiring Diagram)

## CONTRE6-A Speed Controller



1 - Terminal Block		
2 - Fuse		
3 - Kick start selection jumper	 *	Kick start is enabled
		Soft start is enabled
4 - Minimum speed trimmer		Adjusts the min. speed (factory preset to 45% of Us)

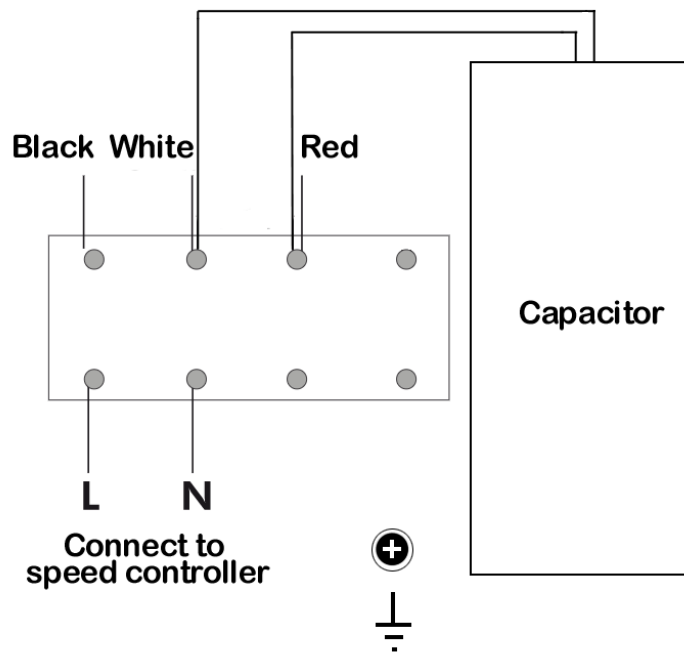
- Insert the cables through the cable glands and do the wiring according to the wiring diagram (see Table above) while adhering to the information from section “Wiring and connections” above.
- Connect the motor / fan (terminals U2, U1 and PE)
- Connect the power supply terminals (terminals L and N)
  - If applicable, connect the unregulated output (L1 and N). It can be used to supply a 230 VAC valve, lamp, etc.



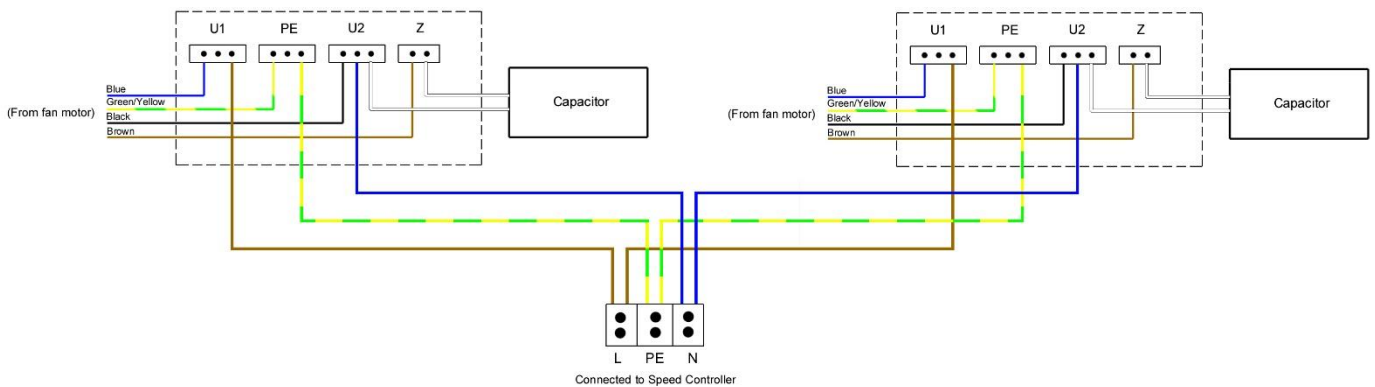
# Wiring Diagram

## Internal Fan Wiring (Exhaust)

- Ⓟ Unscrew the 4 screws and remove the cover.
- Ⓟ Feed cabling thru gland fitting.
- Ⓟ Connect the wiring to the terminal block as show below.
- Ⓟ Replace cover.



## Internal Fan Wiring (Air In)





## Parts List

Part Number	Description	Code
<b>Internal Fan (Exhaust)</b>		
	Large centrifugal fan supplied with square mounting plate	<b>AITT1875-IF#</b> FANBD9/9 <b>AITT2175-IF# / AI2475-IF#</b> FANBD10/10
<b>Internal Fan (Air In)</b>	Small centrifugal fan	FANL23-A8
	Capacitor 4uF	FANCAPACITOR
	6amp speed controller	CONTRE6-A
	Set of two 400mm round flanges	FLANGE8897
	4 Terminal Junction Box	ENCLOSURE1
	3 Way Junction Box	ENCLOSURE2
Flanges	400mm Flange (Pair)	FLANGE8897
	200mm Flange	FLANGE200
<b>Baffle Filters</b>	495 x 495	BAFFLEFILTER2
<b>Gland</b>	M16 Gland M16 Lock Nut	GLAND0M16 LOCKNTM16
<b>FILTER BOX</b>	Weather Louvre	LOUVRE450
	Dust Filter	DUSTFILTER495
	Knurled Thumb Screws	FAST198



## Warranty Information

---

The manufacturer's warranty is only valid in the UK mainland. Northern Ireland, Western Isles, Inner Hebrides and Islands are parts only warranty. Please be aware that the warranty starts from the date of purchase from Parry and not the sale or installation date of the equipment.

To be eligible for a 2 year warranty, products must be serviced at least once within the first 12 months of purchase.

All service calls will be carried out between 8am and 5pm, Monday to Friday.

Your warranty is invalid if your equipment has not been installed in accordance with the manufacturer's instructions. The misuse, alteration or unauthorised repairs of the equipment will also invalidate the warranty.

During the warranty period it is at Parry's discretion whether to repair or replace the equipment.

The warranty only applies if the equipment has been used in a professional manner following the manufacturer's instructions and maintenance guidelines.

The warranty covers defects in the material and component failure only. We are not liable for trading loss, loss of perishable items, water damage or loss due to injury or fire damage.

Please ensure you have referred to the manufacturer's instruction before placing a warranty call.

Contact our warranty department on **01332 875544** for technical assistance.











Please have your model number ready before calling.

All warranty requests must be submitted to [warranty@parry.co.uk](mailto:warranty@parry.co.uk).

Failure to pay any warranty charges will result in your warranty being put on hold until the bill has been settled. Any issues regarding the raised charges should be put in writing to our warranty department for further investigation.

Register your product by visiting our website [www.parry.co.uk](http://www.parry.co.uk)

### **Not covered under warranty**

-  Fault due to incorrect installation, poor maintenance or equipment abuse.
-  Resetting of equipment or circuit breakers.
-  Faulty electrics – e.g. customer's plug socket, plug, wiring, junction box fault, wrong fuse.
-  Products must be serviced within the first 12 months to be eligible for the 2 year warranty
-  Product not covered by warranty if combustible materials have been used, e.g. plastic trays.
-  Foil used on racks, blockages and lime scale issues.
-  Failure to grant access for pre-arranged service call.
-  Equipment that has been set up or used incorrectly e.g. dishwasher detergents, levelling and setting up of doors on a six burner cooker.
-  Excessive carbon build-up on griddle plates or overuse of lava rock on chargrills. (Recommended use by Parry no more than 2kg.)
-  All of the above points are not covered by warranty and any costs incurred, because of the above, will be forwarded to the parties responsible for placing the call.



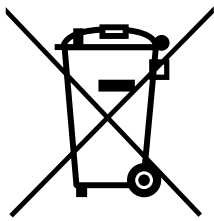
## Disposal & Recycling

---

This appliance is marked according to the European Directive 2002/96/EC on Waste Electrical and Electronic Equipment (WEEE).

By ensuring this product is disposed of correctly, you will help prevent potential negative consequences for the environment and human health which could otherwise be caused by inappropriate waste handling of this product.

A symbol on the product, or on the documents accompanying the product, indicates that



this appliance may not be treated as household waste. Instead it should be handed over to the applicable collection point for the recycling of electrical and electronic equipment.

Disposal must be carried out in accordance with local environmental regulations for waste disposal.






For more detailed information about treatment, recovery and recycling of this product, please contact your local city office, your household waste disposal service or the shop where you purchased the product.

Parry Catering recognises our obligations to the EU DIRECTIVE covering the waste disposal of electrical and electronic equipment (WEEE). Parry Catering are committed to this policy in order to help conserve the environment.

At the end of this unit's life you **MUST** dispose of it in an approved manner. You **MUST** not discard the unit or place it in the refuse bin.

You have several options:

-  Take the unit to an approved WEEE scheme company, there will be one in your area.
-  Take the unit to an approved waste disposal site; many sites are managed by your local authority.
-  Contact the units manufacturer, importer or their agent; the contact details will be on the unit.

There will probably be a charge for this service which will depend on the physical size and location of the unit. You will be given a collection price for a curb side collection based on commercial rates prevailing at the time.

It should be noted that the unit to be collected should be suitably packed and sealed to prevent dangerous gases and fluids from escaping. The condition of the unit must also be clean to comply with health and safety regulations.